



MERCED COUNTY

HEAD START

2926 G Street, Suite 201, Merced, CA 95340 * 209-381-5170

ANNUAL REPORT 2009-2010

ENROLLMENT

Total Children Served*
Full-Day (incl Partnership)
Home Based
Part-Day

Head Start	Early HS
1283	132
75	41
58	91
1150	0

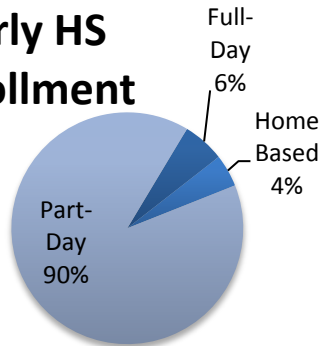
ELIGIBILITY

Based on Federal Poverty Guidelines
Based on Receipt of Public Assistance
Based on Status as a Foster Child
Based on Homeless
Over-Income Children Served

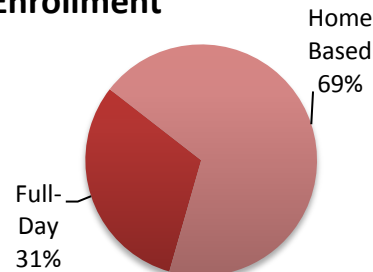
Head Start	Early HS
746	86
408	36
34	7
32	2
63	1

As of 6/30/2010, no pregnant mothers had been served in Early Head Start.

Early HS Enrollment



Early HS Enrollment



DISABILITIES

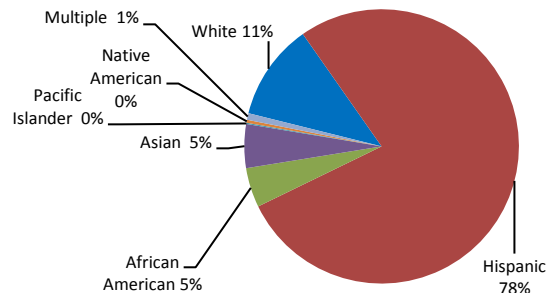
Head Start	Early HS
115	5

11% of funded enrollment
3% of funded enrollment

Head Start Disability Types Children with an IEP or IFSP

Autism	6	5%
Hearing Impairment	2	2%
Mental Retardation	11	10%
Orthopedic Impairment	4	3%
Other Impairments	8	7%
Multiple Disabilities	12	10%
Speech & Language	72	63%

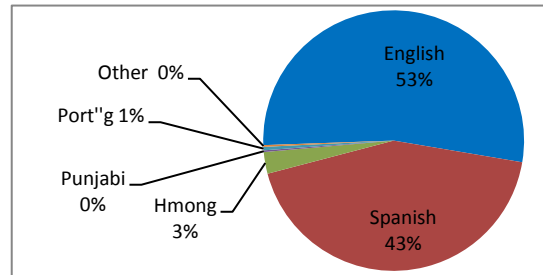
Children by Racial/Ethnic Background



	Head Start	Early HS	Combined
White (Non-Hispanic)	151	10	161
Hispanic	990	107	1097
Black/African American (Non-Hispanic)	57	9	66
Asian	70	3	73
Pacific Islander	1	1	2
Native American (Non-Hispanic)	5	0	5
Multiple	9	2	11

Children by Primary Language

	Head Start	Early HS	Combined
English	690	63	753
Spanish	545	67	612
Hmong	37	1	38
Punjabi	3	0	3
Portuguese	5	1	6
Other (Arabic, Mien, Cambodian)	3	0	3



% of Eligible Children Served

Head Start	Early HS
45%	3%

Average Monthly Enrollment

Head Start	Early HS
100%	n/a
99%	56%

Through April, 2010
Through June, 2010

Children Receiving Medical Care

	Head Start	Early HS
% of Children Receiving a physical exam	98.75%	92.42%
% of Children Receiving a dental exam	91.91%	28.03%

The following Parent Workshops were offered to all Head Start parents in 2009-10:

- Family Literacy Activities
- Family Budgeting and Financial Literacy
- Parenting as preschool aged child
- CPR/First Aid and Safety
- Parent Advocacy in the Elementary Schools/Transition to and from Head Start
- Family Nutrition and Wellness
- Preventing Childhood/Family Illness
- Importance of Male Involvement

Additional parent workshops were provided at every site, based upon the unique interests of Head Start parents at each site.

DEVELOPMENTALLY APPROPRIATE CLASSROOMS/KINDERGARTEN TRANSITION

The Merced Head Start Program provides developmentally appropriate education to over a thousand preschool children in Merced County. The purpose of the program is to help children gain knowledge, skills and confidence necessary to be prepared to succeed in their present environment and with later responsibilities in school and life.

Head Start provides an environment of acceptance that supports and respects gender, culture, language, ethnicity, and family composition. The academic program is based on the Houghton Mifflin Pre-K Curriculum. HMP-K is research based and helps children build knowledge and skills in math, language, science, and the arts, while promoting cognitive, physical and socio-emotional development.

Every school year the Head Start Program collaborates with each of the schools districts in the county that receive Head Start children transitioning into kindergarten. This year, 706 four-year-olds completed the year at Merced County Head Start and transitioned into Merced County Kindergartens.

FISCAL SERVICES

HEAD START

Merced County Head Start received and/or booked the following revenues during the 2009-10 program/fiscal year:

\$8,169,051 in Federal Head Start Program Operations funds. Expenses were as follows:

Personnel	76.6%
Operations	10.3%
Supplies	6.6%
Indirect	6.5%

\$77,570 in Federal Head Start Training and Technical Assistance funds.

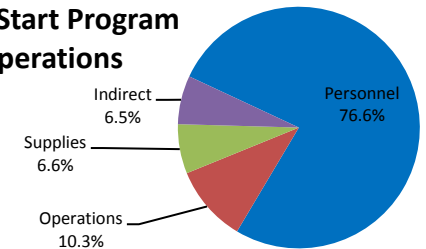
\$547,064 in American Recovery and Reinvestment Act COLA & Quality Improvement funds.

\$155,421 in Supplemental Training and Technical Assistance funds.

\$570,820 in USDA reimbursements for the Child and Adult Care Food Program (CACFP)

\$9,519,926 Total Funds for Merced County Head Start

Head Start Program Operations



EARLY HEAD START

\$769,905 in Federal Early Head Start Program Operations funds. Expenses were as follows:

Personnel	81.1%
Operations	5.7%
Supplies	9.3%
Indirect	3.9%

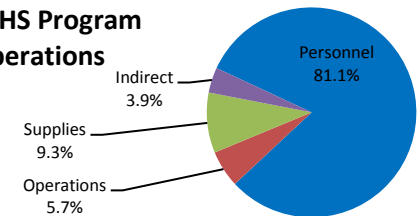
\$62,678 in Federal Head Start Training and Technical Assistance funds.

\$501,268 in Early Head Start; Start-up funds.

\$16,695 in Early Head Start; Start-up Training and Technical Assistance funds.

\$1,350,546 Total Funds for Merced County Early Head Start

Early HS Program Operations



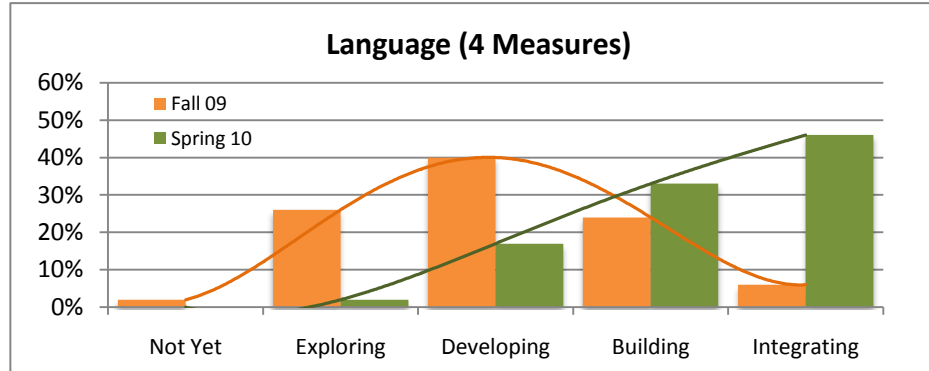
There were no findings in the most recent audit report conducted on the Merced County Office of Education. One finding was identified as a result of the December, 2009 Federal Review of the Merced County Head Start Program; the finding has since been corrected.

EDUCATIONAL OUTCOMES

Comparative DRDP-R Results - Selected Domains - Fall 2009 to Spring 2010

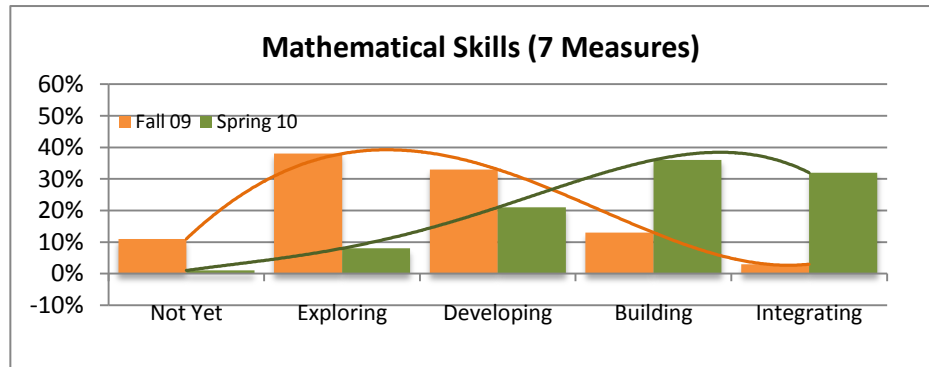
Language (4 Measures)

	Fall 09	Spring 10
Not Yet	2%	0%
Exploring	26%	2%
Developing	40%	17%
Building	24%	33%
Integrating	6%	46%



Mathematical Skills (7 Measures)

	Fall 09	Spring 10
Not Yet	11%	1%
Exploring	38%	8%
Developing	33%	21%
Building	13%	36%
Integrating	3%	32%



Literacy Skills (5 Measures)

	Fall 09	Spring 10
Not Yet	8%	1%
Exploring	35%	7%
Developing	37%	19%
Building	16%	38%
Integrating	3%	34%

